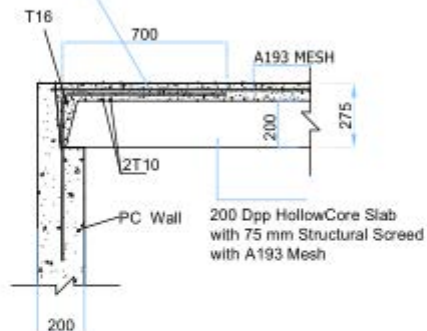


SLAB-WALL CONNECTION DETAIL: (PC Panel - 200 Hollowcore Slab)

T10 @ 600 mm Projecting from the PC Panels and to be Bent Down after Placement of Pre-Cast Slabs



T10 @ 600 mm Projecting from the PC Panels and to be Bent Down after Placement of Pre-Cast Slabs

