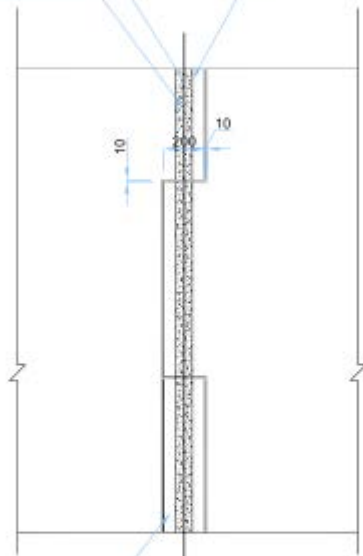


# TYPICAL VERTICAL PANEL JOINT: (SCARF JOINT- 3 PC Panels)

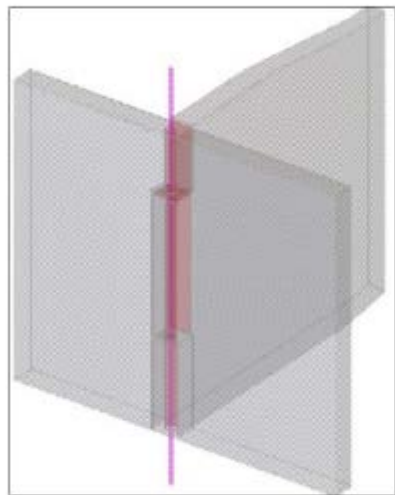
60N HIGH FLOW  
NON-SHRINK GROUT

H20 VERTICAL BAR

80MM VERTICAL TUBE  
CAST IN PC PANEL FOR  
1H20 VERTICAL TIE



BACK PC PANEL



BACK PC PANEL

80MM VERTICAL TUBE  
CAST IN PC PANEL FOR  
1H20 VERTICAL TIE

60N HIGH FLOW  
NON-SHRINK GROUT

H20 VERTICAL BAR

